



中国认可  
国际互认  
检测  
TESTING  
CNAS L5772

# Test Report

**EN 149:2001+A1:2009 protective devices. Filtering half masks to protect against particles. Requirements, testing, marking**

**Product:** Filtering NR Protection Mask  
**Report No.:** PTC20061100401C-EN01  
**Client:** Dongguan Olayer Technology Co.ltd  
**Client Address:** ROOM 201,NO.22,JUFU WEST ROAD,YUANJIANGYUAN,CHANGPING TOWN,DONGGUAN CITY,GUANGDONG PROVINCE, CHINA, 523000.  
**Manufacturer:** Dongguan Olayer Technology Co.ltd  
**Manufacturer Address:** ROOM 201,NO.22,JUFU WEST ROAD,YUANJIANGYUAN,CHANGPING TOWN,DONGGUAN CITY,GUANGDONG PROVINCE, CHINA, 523000.  
**Contact:** Yang Lin  
**Model(s):** OL001  
**Classification:** FFP2 NR  
**Date of Tests:** 2020.07.20~2020.07.28  
2020.08.04~2020.08.12

Signed for and on Behalf of PTC

Prepare by:

Arme

Checked by:

Jue

Approved by:

Tim Mo



This report is issued according to the general clauses in [www.ptc-testing.com](http://www.ptc-testing.com) by PTC. Responsibility, guarantee and law restriction are defined in the general service clauses. The report is only responsible for the submitted sample(s) except as otherwise noted.  
The report could not be copied without permission

**Precise Testing & Certification (Guangdong) Co., Ltd. (PTC)**

Building 1, No. 6, Tongxin Road, Dongcheng Street, Dongguan, Guangdong, China.  
Tel: 86-769-38808222 Fax: 86-769-38826111 [http:// www.ptc-testing.com](http://www.ptc-testing.com)



# Test Report

Report No.:PTC20061100401C-EN01

Issue Date: Aug.13, 2020

Page 2 of 14

## Summary of assessment

Clause	Assessment
7.3 Visual inspection	Not tested
7.4 Packaging	PASS
7.5 Material	PASS
7.6 Cleaning and disinfecting	N/A
7.7 Practical performance	PASS
7.8 Finish of parts	PASS
7.9.1 Total inward leakage	PASS
7.9.2 Penetration of filter material	PASS
7.10 Compatibility with skin	PASS
7.11 Flammability	PASS
7.12 Carbon dioxide content of the inhalation air	PASS
7.13 Head harness	PASS
7.14 Field of vision	PASS
7.15 Exhalation valve	N/A
7.16 Breathing resistance	PASS
7.17 Clogging	N/A
7.18 Demountable parts	PASS
9 Marking	Not tested

### Remark:

PASS: comply with requirement of standard

N/A: not application

This report is issued according to the general clauses in [www.ptc-testing.com](http://www.ptc-testing.com) by PTC. Responsibility, guarantee and law restriction are defined in the general service clauses. The report is only responsible for the submitted sample(s) except as otherwise noted.

The report could not be copied without permission

**Precise Testing & Certification (Guangdong) Co., Ltd. (PTC)**

Building 1, No. 6, Tongxin Road, Dongcheng Street, Dongguan, Guangdong, China.  
Tel: 86-769-38808222 Fax: 86-769-38826111 [http:// www.ptc-testing.com](http://www.ptc-testing.com)



# Test Report

Report No.:PTC20061100401C-EN01

Issue Date: Aug.13, 2020

Page 3 of 14

Not tested: the clause were not required

## Test Result:

Requirement	Test Result	Conclusion
<b>7.3 Visual inspection</b> The visual inspection shall also include the marking and the information supplied by the manufacturer.	Not tested	<b>Not tested</b>
<b>7.4 Packaging</b> Particle filtering half masks shall be offered for sale packaged in such a way that they are protected against mechanical damage and contamination before use.	In accordance with the requirement.	<b>Pass</b>
<b>7.5 Material</b> Materials used shall be suitable to withstand handling and wear over the period for which the particle filtering half mask is designed to be used. Any material from the filter media released by the air flow through the filter shall not constitute a hazard or nuisance for the wearer. After undergoing the conditioning described in 8.3.1 none of the particle filtering half masks shall have suffered mechanical failure of the facepiece or straps. When conditioned in accordance with 8.3.1 and 8.3.2 the particle filtering half mask shall not collapse.	No mechanical failure after undergoing the conditioning described in 8.3.1, No collapse when conditioned in accordance with 8.3.1 and 8.3.2.	<b>Pass</b>
<b>7.6 Cleaning and disinfecting</b> If the particle filtering half mask is designed to be re-usable, the materials used shall withstand the cleaning and disinfecting agents and procedures to be specified by the manufacturer.	Single shift use only	<b>N/A</b>
<b>7.7 Practical performance</b> The particle filtering half mask shall undergo practical performance tests under realistic conditions	No imperfections	<b>Pass</b>

This report is issued according to the general clauses in [www.ptc-testing.com](http://www.ptc-testing.com) by PTC. Responsibility, guarantee and law restriction are defined in the general service clauses. The report is only responsible for the submitted sample(s) except as otherwise noted.  
The report could not be copied without permission

**Precise Testing & Certification (Guangdong) Co., Ltd. (PTC)**

Building 1, No. 6, Tongxin Road, Dongcheng Street, Dongguan, Guangdong, China.  
Tel: 86-769-38808222 Fax: 86-769-38826111 [http:// www.ptc-testing.com](http://www.ptc-testing.com)



# Test Report

Report No.:PTC20061100401C-EN01

Issue Date: Aug.13, 2020

Page 4 of 14

## 7.8 Finish of parts

Parts of the device likely to come into contact with the wearer shall have no sharp edges or burrs.

No sharp edges or burrs.

Pass

## 7.9.1 Total inward leakage

For particle filtering half masks fitted in accordance with the manufacturer's information, at least 46 out of the 50 individual exercise results (i.e. 10 subjects x 5 exercises) for total inward leakage shall be not greater than 25 % for FFP1, 11 % for FFP2, 5 % for FFP3

FFP2, Test results are shown in Annex A Table 7.9.1-A&B

Pass

and, in addition, at least 8 out of the 10 individual wearer arithmetic means for the total inward leakage shall be not greater than 22 % for FFP1, 8 % for FFP2, 2 % for FFP3.

## 7.9.2 Penetration of filter material

The penetration of the filter of the particle filtering half mask shall meet the requirements of Table 1.

	Sodium chloride test 95 l/min	Paraffin oil test 95 l/min
FFP1	≤ 20%	≤ 20%
FFP2	≤ 6%	≤ 6%
FFP3	≤ 1%	≤ 1%

FFP2, Test results are shown in Annex A Table 7.9.2.

Pass

## 7.10 Compatibility with skin

Materials that may come into contact with the wearer's skin shall not be known to be likely to cause irritation or any other adverse effect to health.

No irritation or any other adverse effect to health.

Pass

## 7.11 Flammability

When tested, the particle filtering half mask shall not burn or not to continue to burn for more than 5 s after removal from the flame.

Test results are shown in Annex A Table 7.11.

Pass

## 7.12 Carbon dioxide content of the inhalation air

The carbon dioxide content of the inhalation air (dead space) shall not exceed an average of 1,0 % (by volume)

Test results are shown in Annex A Table 7.12.

Pass

## 7.13 Head harness

The head harness shall be designed so that the particle filtering half mask

Head harness can be donned and

Pass

This report is issued according to the general clauses in [www.ptc-testing.com](http://www.ptc-testing.com) by PTC. Responsibility, guarantee and law restriction are defined in the general service clauses. The report is only responsible for the submitted sample(s) except as otherwise noted.  
The report could not be copied without permission

**Precise Testing & Certification (Guangdong) Co., Ltd. (PTC)**

Building 1, No. 6, Tongxin Road, Dongcheng Street, Dongguan, Guangdong, China.  
Tel: 86-769-38808222 Fax: 86-769-38826111 [http:// www.ptc-testing.com](http://www.ptc-testing.com)



# Test Report

Report No.:PTC20061100401C-EN01

Issue Date: Aug.13, 2020

Page 5 of 14

can be donned and removed easily.

removed easily,  
adjustable or  
self-adjusting and  
have sufficiently  
robust to hold the  
particle filtering half  
mask firmly.

The head harness shall be adjustable or self-adjusting and shall be sufficiently robust to hold the particle filtering half mask firmly in position and be capable of maintaining total inward leakage requirements for the device.

### 7.14 Field of vision

The field of vision is acceptable if determined so in practical performance tests.

Pass the practical  
performance tests.

**Pass**

### 7.15 Exhalation valve

A particle filtering half mask may have one or more exhalation valve(s), which shall function correctly in all orientations.

If an exhalation valve is provided it shall be protected against or be resistant to dirt and mechanical damage and may be shrouded or may include any other device that may be necessary for the particle filtering half mask to comply with 7.9.

No exhalation valve

**N/A**

Exhalation valve(s), if fitted, shall continue to operate correctly after a continuous exhalation flow of 300 l/min over a period of 30 s.

When the exhalation valve housing is attached to the faceblank, it shall withstand axially a tensile force of 10 N applied for 10 s.

### 7.16 Breathing resistance

Classification	Maximum permitted resistance (mbar)		
	Inhalation		Exhalation
	30 l/min	95 l/min	160 l/min
FFP1	0.6	2.1	3.0
FFP2	0.7	2.4	3.0
FFP3	1.0	3.0	3.0

FFP2. Test results  
are shown in Annex  
A Table 7.16.

**Pass**

### 7.17 Clogging

#### 7.17.2 Breathing resistance

Valved particle filtering half masks:

Single shift use  
only.

**N/A**

This report is issued according to the general clauses in www.ptc-testing.com by PTC. Responsibility, guarantee and law restriction are defined in the general service clauses. The report is only responsible for the submitted sample(s) except as otherwise noted. The report could not be copied without permission

**Precise Testing & Certification (Guangdong) Co., Ltd. (PTC)**

Building 1, No. 6, Tongxin Road, Dongcheng Street, Dongguan, Guangdong, China.  
Tel: 86-769-38808222 Fax: 86-769-38826111 http:// www.ptc-testing.com



# Test Report

Report No.:PTC20061100401C-EN01

Issue Date: Aug.13, 2020

Page 6 of 14

After clogging the inhalation resistances shall not exceed:  
FFP1: 4 mbar, FFP2: 5 mbar, FFP3: 7 mbar at 95L/min continuous flow  
The exhalation resistance shall not exceed 3 mbar at 160 L/min continuous flow

Valveless particle filtering half masks  
After clogging the inhalation and exhalation resistances shall not exceed:  
FFP1: 3 mbar, FFP2: 4 mbar, FFP3: 5 mbar at 95L/min continuous flow

### 7.17.3 Penetration of filter material

	Sodium chloride test 95 l/min	Paraffin oil test 95 l/min
FFP1	≤ 20%	≤ 20%
FFP2	≤ 6%	≤ 6%
FFP3	≤ 1%	≤ 1%

### 7.18 Demountable parts

All demountable parts (if fitted) shall be readily connected and secured, where possible by hand

Comply

Pass

## 9 Marking

### 9.1 Packaging

The following information shall be clearly and durably marked on the smallest commercially available packaging or legible through it if the packaging is transparent.

9.1.1 The name, trademark or other means of identification of the manufacturer or supplier.

9.1.2 Type-identifying marking.

Not tested

Not tested

9.1.3 Classification

The appropriate class (FFP1, FFP2 or FFP3) followed by a single space and then: "NR" if the particle filtering half mask is limited to single shift use only. Example: FFP3 NR, or "R" if the particle filtering half mask is re-usable.

Example: FFP2 R D.

9.1.4 The number and year of publication of this European Standard.

9.1.5 At least the year of end of shelf life. The end of shelf life may be informed by a pictogram as shown in Figure 12a, where yyyy/mm

This report is issued according to the general clauses in www.ptc-testing.com by PTC. Responsibility, guarantee and law restriction are defined in the general service clauses. The report is only responsible for the submitted sample(s) except as otherwise noted.  
The report could not be copied without permission

**Precise Testing & Certification (Guangdong) Co., Ltd. (PTC)**

Building 1, No. 6, Tongxin Road, Dongcheng Street, Dongguan, Guangdong, China.  
Tel: 86-769-38808222 Fax: 86-769-38826111 http:// www.ptc-testing.com



# Test Report

Report No.:PTC20061100401C-EN01

Issue Date: Aug.13, 2020

Page 7 of 14

indicates the year and month.

9.1.6 The sentence 'see information supplied by the manufacturer', at least in the official language(s) of the country of destination, or by using the pictogram as shown in Figure 12b.

9.1.7 The manufacturer's recommended conditions of storage (at least the temperature and humidity) or equivalent pictogram, as shown in Figures 12c and 12d.

9.1.8 The packaging of those particle filtering half masks passing the dolomite clogging test shall be additionally marked with the letter "D". This letter shall follow the classification marking preceded by a single space.

## 9.2 Particle filtering half mask

Particle filtering half masks complying with this European Standard shall be clearly and durably marked with the following:

9.2.1 The name, trademark or other means of identification of the manufacturer or supplier.

9.2.2 Type-identifying marking.

9.2.3 The number and year of publication of this European Standard.

9.2.4 Classification

The appropriate class (FFP1, FFP2 or FFP3) followed by a single space and then: "NR" if the particle filtering half mask is limited to single shift use only. Example: FFP3 NR, or "R" if the particle filtering half mask is re-usable. Example: FFP2 R D.

9.2.5 If appropriate the letter D (dolomite) in accordance with clogging performance. This letter shall follow the classification marking preceded by a single space.

9.2.6 Sub-assemblies and components with considerable bearing on safety shall be marked so that they can be identified.

---

This report is issued according to the general clauses in [www.ptc-testing.com](http://www.ptc-testing.com) by PTC. Responsibility, guarantee and law restriction are defined in the general service clauses. The report is only responsible for the submitted sample(s) except as otherwise noted.  
The report could not be copied without permission

**Precise Testing & Certification (Guangdong) Co., Ltd. (PTC)**

Building 1, No. 6, Tongxin Road, Dongcheng Street, Dongguan, Guangdong, China.  
Tel: 86-769-38808222 Fax: 86-769-38826111 [http:// www.ptc-testing.com](http://www.ptc-testing.com)



# Test Report

Report No.: PTC20061100401C-EN01

Issue Date: Aug.13, 2020

Page 8 of 14

## Annex A: Summarization of Test Data

**Table 7.9.1-A: Inward Leakage Test Data**

Test specification: EN 149:2001+A1:2009 Clause 8.5

Subject	Sample No.	Condition	Walk (%)	Head Side/side (%)	Head up/down (%)	Talk (%)	Walk (%)	Mean (%)
Lv	1	A.R	3.7	3.3	3.1	2.6	1.8	2.9
Li	2	A.R	2.7	1.2	1.3	1.2	1.4	1.6
Zhong	3	A.R	5.1	7.2	7.1	6.7	6.9	6.6
Xu	4	A.R	3.1	2.9	3.0	3.3	2.8	3.0
Ma	5	A.R	2.7	3.2	3.1	3.7	3.6	3.3
Chen	6	T.C	7.4	6.7	8.2	6.3	7.3	7.2
Chen	7	T.C	2.2	4.6	5.4	6.1	6.3	4.9
Zhuo	8	T.C	3.4	2.8	3.4	3.6	2.6	3.2
Chen	9	T.C	2.0	3.9	2.2	1.2	2.6	2.4
Zhang	10	T.C	3.0	3.1	2.6	3.3	3.8	3.2

**Table 7.9.1-B: Facial dimension**

Subject	Face Length	Face Width	Face Depth	Mouth Width
Lv	113	139	104	53
Li	120	135	112	55
Zhong	108	135	106	56
Xu	120	150	120	70
Ma	130	170	130	80
Chen	110	160	90	40
Chen	115	145	110	50
Zhuo	103	146	100	50
Chen	110	145	95	40
Zhang	144	141	101	54

This report is issued according to the general clauses in [www.ptc-testing.com](http://www.ptc-testing.com) by PTC. Responsibility, guarantee and law restriction are defined in the general service clauses. The report is only responsible for the submitted sample(s) except as otherwise noted.  
The report could not be copied without permission

**Precise Testing & Certification (Guangdong) Co., Ltd. (PTC)**

Building 1, No. 6, Tongxin Road, Dongcheng Street, Dongguan, Guangdong, China.  
Tel: 86-769-38808222 Fax: 86-769-38826111 [http:// www.ptc-testing.com](http://www.ptc-testing.com)





# Test Report

Report No.:PTC20061100401C-EN01

Issue Date: Aug.13, 2020

Page 9 of 14

**Table 7.9.2: Penetration of filter material**

Test specification: EN 149:2001+A1:2009 Clause 8.11

Aerosol	Condition	Sample No.	Penetration (%)	Assessment
Sodium chloride test	As received	11	0.36	FFP2 Pass
		12	0.18	
		13	0.10	
	Simulated wearing treatment	14	0.05	
		15	0.04	
		16	0.07	
	Mechanical strength + Temperature conditioned	17	0.23	
		18	0.79	
		19	0.13	
Paraffin oil test	As received	20	1.30	FFP2 Pass
		21	1.01	
		22	0.78	
	Simulated wearing treatment	23	0.13	
		24	0.10	
		25	0.09	
	Mechanical strength + Temperature conditioned	26	0.96	
		27	0.79	
		28	0.33	

This report is issued according to the general clauses in [www.ptc-testing.com](http://www.ptc-testing.com) by PTC. Responsibility, guarantee and law restriction are defined in the general service clauses. The report is only responsible for the submitted sample(s) except as otherwise noted.  
The report could not be copied without permission

**Precise Testing & Certification (Guangdong) Co., Ltd. (PTC)**  
 Building 1, No. 6, Tongxin Road, Dongcheng Street, Dongguan, Guangdong, China.  
 Tel: 86-769-38808222 Fax: 86-769-38826111 [http:// www.ptc-testing.com](http://www.ptc-testing.com)



# Test Report

Report No.:PTC20061100401C-EN01

Issue Date: Aug.13, 2020

Page 10 of 14

**Table 7.11: Flammability**

Test specification: EN 149:2001+A1:2009 Clause 8.6

Condition	Sample No.	Result	Assessment
As received	29	No burn	Pass
	30	No burn	
Temperature conditioned	31	No burn	
	32	No burn	

**Table 7.12: Carbon dioxide content of the inhalation air**

Test specification: EN 149:2001+A1:2009 Clause 8.7

Condition	Sample No.	Result (%)	Assessment
As received	33	0.0211	Pass
	34	0.0241	
	35	0.0193	

This report is issued according to the general clauses in [www.ptc-testing.com](http://www.ptc-testing.com) by PTC. Responsibility, guarantee and law restriction are defined in the general service clauses. The report is only responsible for the submitted sample(s) except as otherwise noted.  
The report could not be copied without permission

**Precise Testing & Certification (Guangdong) Co., Ltd. (PTC)**

Building 1, No. 6, Tongxin Road, Dongcheng Street, Dongguan, Guangdong, China.  
Tel: 86-769-38808222 Fax: 86-769-38826111 [http:// www.ptc-testing.com](http://www.ptc-testing.com)



# Test Report

Report No.:PTC20061100401C-EN01

Issue Date: Aug.13, 2020

Page 11 of 14

**Table 7.16: Breathing resistance (mbar)**

Test specification: EN 149:2001+A1:2009 Clause 8.9

As received	Flow Rate		36					37					38				
	Inhalation	30 l/min	0.35					0.35					0.38				
		95 l/min	1.14					1.15					1.15				
Exhalation	160 l/min	A	B	C	D	E	A	B	C	D	E	A	B	C	D	E	
		1.9	1.8	1.7	1.8	1.8	1.9	1.8	1.8	1.8	1.8	1.8	1.9	1.9	1.9	1.9	
Simulated wearing treatment	Flow Rate		39					40					41				
	Inhalation	30 l/min	0.31					0.32					0.31				
		95 l/min	1.27					1.31					1.33				
Exhalation	160 l/min	A	B	C	D	E	A	B	C	D	E	A	B	C	D	E	
		2.0	2.0	2.0	2.0	1.9	1.9	1.8	1.9	1.9	1.9	1.9	2.0	2.0	2.0	1.9	
Temperature conditioned	Flow Rate		42					43					44				
	Inhalation	30 l/min	0.36					0.35					0.36				
		95 l/min	1.05					1.04					1.10				
Exhalation	160 l/min	A	B	C	D	E	A	B	C	D	E	A	B	C	D	E	
		1.7	1.6	1.7	1.7	1.7	1.7	1.7	1.6	1.6	1.6	1.7	1.7	1.7	1.7	1.7	
Assessment	FFP2 Pass																

A: Facing directly ahead      B: Facing vertically upwards      C: facing vertically downwards

D: Lying on the left side      E: Lying on the right side

This report is issued according to the general clauses in www.ptc-testing.com by PTC. Responsibility, guarantee and law restriction are defined in the general service clauses. The report is only responsible for the submitted sample(s) except as otherwise noted.  
The report could not be copied without permission

**Precise Testing & Certification (Guangdong) Co., Ltd. (PTC)**

Building 1, No. 6, Tongxin Road, Dongcheng Street, Dongguan, Guangdong, China.  
Tel: 86-769-38808222      Fax: 86-769-38826111      http:// www.ptc-testing.com



# Test Report

Report No.:PTC20061100401C-EN01

Issue Date: Aug.13, 2020

Page 12 of 14

Test	Uncertainty
Total inward leakage	3.8%
Penetration of filter material(NaCl)	3.5%
Penetration of filter material(Paraffin oil)	4.2%
Carbon dioxide content of the inhalation air	4.5%
Breathing resistance(30L/min)	5.2%
Breathing resistance(95L/min)	5.4%
Breathing resistance(160)L/min)	6.0%

This report is issued according to the general clauses in [www.ptc-testing.com](http://www.ptc-testing.com) by PTC. Responsibility, guarantee and law restriction are defined in the general service clauses. The report is only responsible for the submitted sample(s) except as otherwise noted.  
The report could not be copied without permission

**Precise Testing & Certification (Guangdong) Co., Ltd. (PTC)**

Building 1, No. 6, Tongxin Road, Dongcheng Street, Dongguan, Guangdong, China.  
Tel: 86-769-38808222 Fax: 86-769-38826111 [http:// www.ptc-testing.com](http://www.ptc-testing.com)



# Test Report

Report No.:PTC20061100401C-EN01

Issue Date: Aug.13, 2020

Page 13 of 14

Photo(s) of Sample:



This report is issued according to the general clauses in [www.ptc-testing.com](http://www.ptc-testing.com) by PTC. Responsibility, guarantee and law restriction are defined in the general service clauses. The report is only responsible for the submitted sample(s) except as otherwise noted.  
The report could not be copied without permission

**Precise Testing & Certification (Guangdong) Co., Ltd. (PTC)**  
Building 1, No. 6, Tongxin Road, Dongcheng Street, Dongguan, Guangdong, China.  
Tel: 86-769-38808222 Fax: 86-769-38826111 [http:// www.ptc-testing.com](http://www.ptc-testing.com)

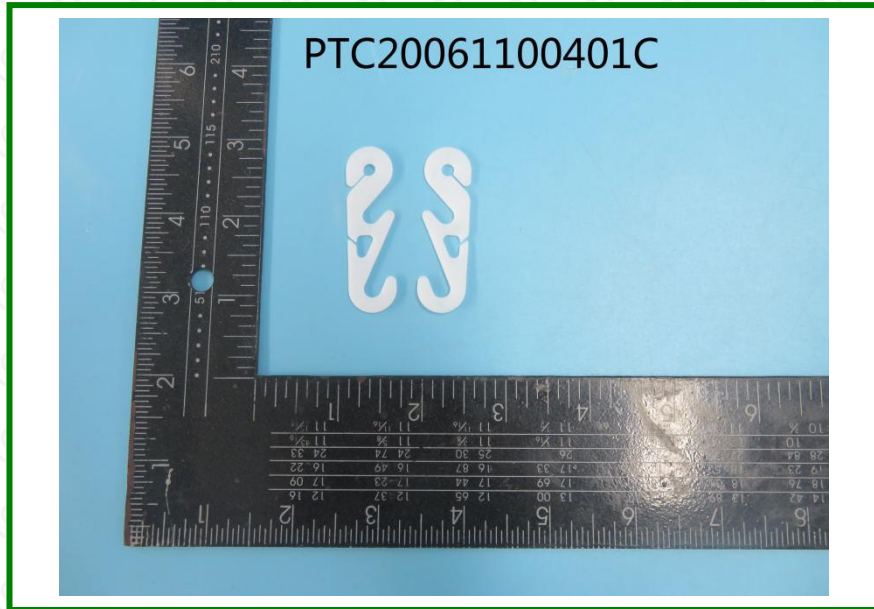


# Test Report

Report No.:PTC20061100401C-EN01

Issue Date: Aug.13, 2020

Page 14 of 14



\*\*\*End of Report\*\*\*

This report is issued according to the general clauses in [www.ptc-testing.com](http://www.ptc-testing.com) by PTC. Responsibility, guarantee and law restriction are defined in the general service clauses. The report is only responsible for the submitted sample(s) except as otherwise noted.  
The report could not be copied without permission

**Precise Testing & Certification (Guangdong) Co., Ltd. (PTC)**  
Building 1, No. 6, Tongxin Road, Dongcheng Street, Dongguan, Guangdong, China.  
Tel: 86-769-38808222 Fax: 86-769-38826111 [http:// www.ptc-testing.com](http://www.ptc-testing.com)